



GMT Constitutional Area 5 - J, Group I

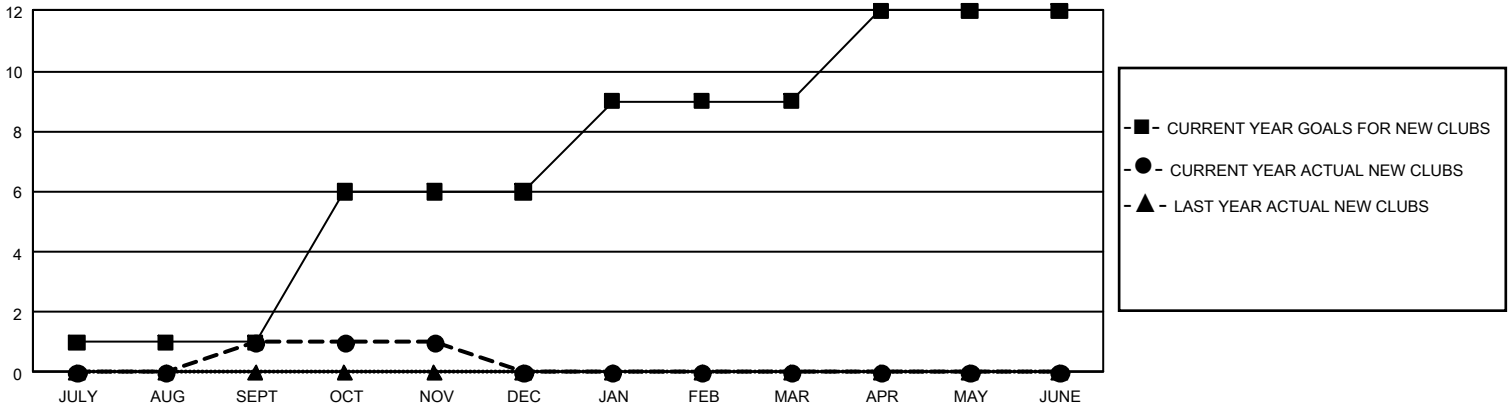
GMT: OPEN

REPORT DOES NOT INCLUDE CLUBS IN UNDISTRICTED AREAS.

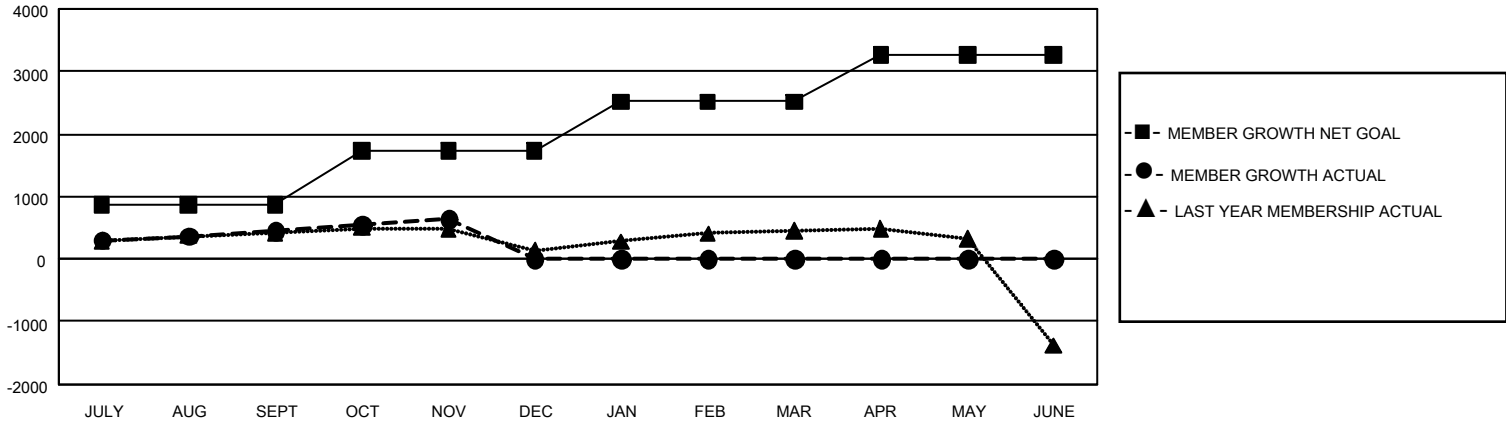
Clubs			
RESULTS FOR 2019-2020			
QUARTER	NEW CLUB GOAL	NEW CLUBS	DROPPED CLUBS
JULY/AUG/SEPT	3	1	2
OCT/NOV/DEC	15	0	0
JAN/FEB/MAR	9	0	0
APR/MAY/JUNE	9	0	0

Members			
RESULTS FOR 2019-2020			
QUARTER	MEMBER GROWTH NET GOAL	MEMBER GROWTH ACTUAL	DROPPED MEMBERS ACTUAL (including transfers)
JULY/AUG/SEPT	2,595	1,034	525
OCT/NOV/DEC	2,598	395	201
JAN/FEB/MAR	2,358	0	0
APR/MAY/JUNE	2,265	0	0

GOALS AND ACTUAL NEW CLUBS CUMULATIVE



GOALS AND ACTUAL MEMBERS CUMULATIVE



<p>DROPPED CLUBS: 2</p>	<p>516 CLUBS OF 816 ADDED 1 OR MORE NEW MEMBERS</p>	<p><u>GENDER DISTRIBUTION</u></p>	
		<p>MALE 26,528 (73.60%)</p> <p>FEMALE 9,515 (26.40%)</p>	
<p><u>DROPPED MEMBERS</u></p>		<p>TOTAL FAMILY UNIT MEMBERS 15,707</p>	
<p>DECEASED 116</p> <p>CLUB CANCELLED 35</p> <p>OTHER 575</p> <p>TOTAL 726</p>	<p>CLICK HERE FOR CUMULATIVE MEMBERSHIP DATA</p>	<p>FAMILY MEMBERS PAYING HALF DUES 8,428</p>	